

JONATHAN'S CREEK

SHEET 2 OF 3 SHEETS

42

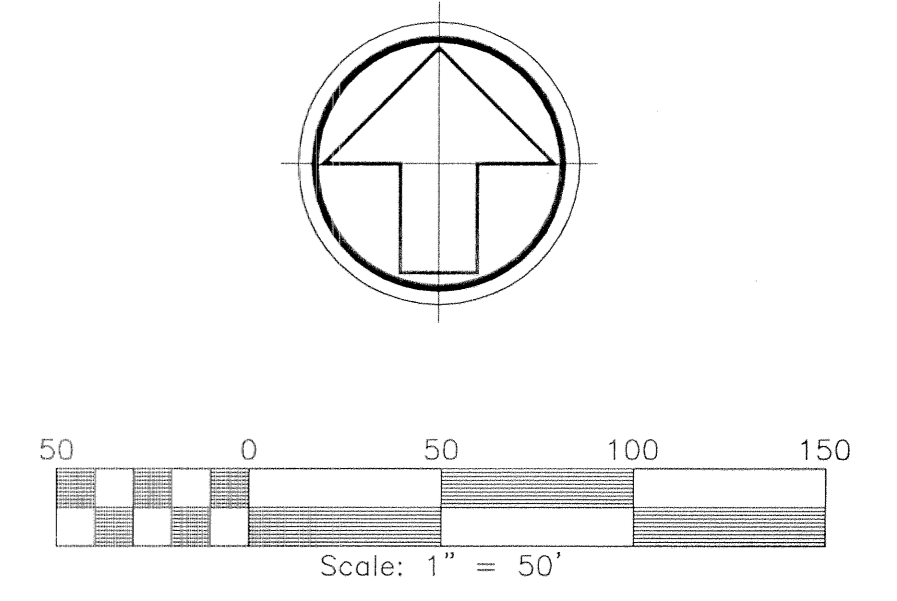
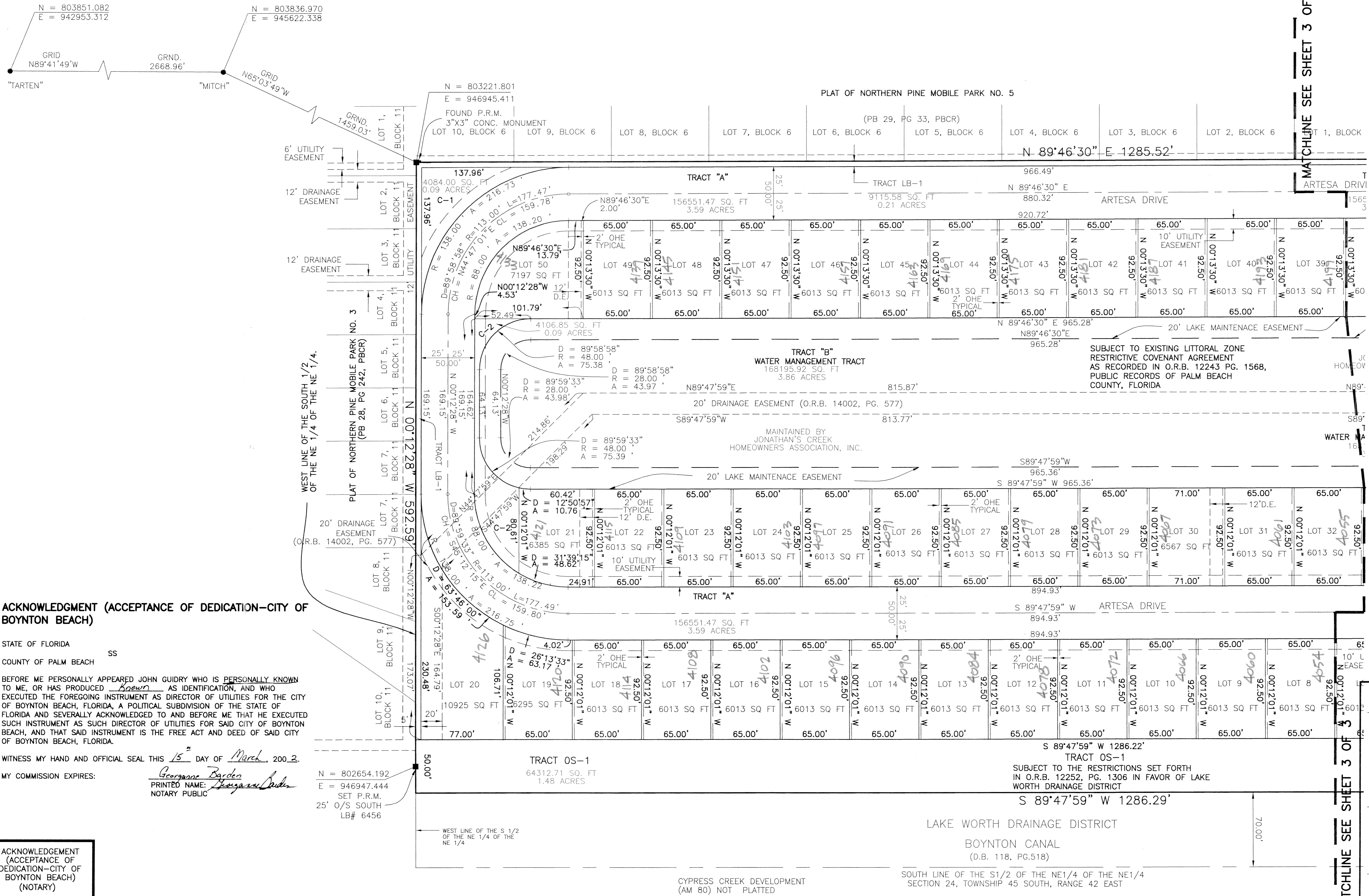
THIS INSTRUMENT PREPARED BY:
MICHAEL D. ROSE, PSM

SDA SHAH & ASSOCIATES ENGINEERING SURVEYING PLANNING
CERTIFICATE OF AUTHORIZATION NO. LB6456
1885 W. Commercial Blvd. • Suite 190 • Ft. Lauderdale, FL 33309
PH: 954-776-7604 • FAX: 954-776-7608

OCTOBER, 2000

A PORTION OF THE SOUTH ONE-HALF (S1/2) OF THE NORTHEAST ONE-QUARTER (NE1/4) OF THE NORTHEAST ONE-QUARTER (NE1/4) SECTION 24, TOWNSHIP 45 SOUTH, RANGE 42 EAST, PALM BEACH COUNTY, FLORIDA.

STATE OF FLORIDA
COUNTY OF PALM BEACH
This Plat was filed for record at _____ M., this _____ day of _____, 2000 and duly recorded in Plat Book No. _____ on Pages _____ and _____
DOROTHY H. WILKEN, CLERK
BY: _____ DC



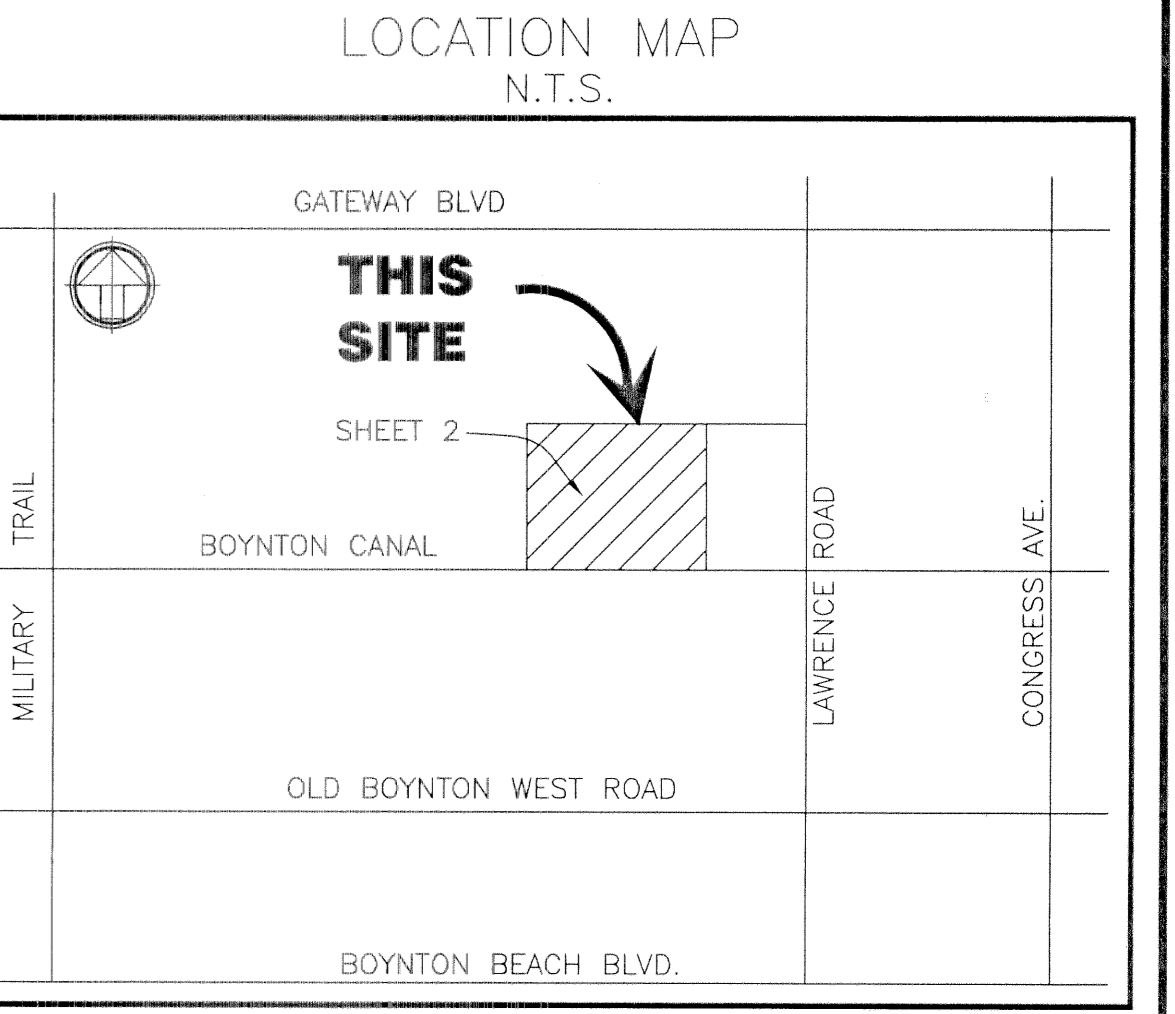
- LEGEND:**
- P.R.M. = PERMANENT REFERENCE MARKER
 - GRND. = GROUND
 - P.C.P. = PERMANENT CONTROL POINT
 - SQ. = SQUARE
 - FT. = FEET
 - D = DELTA
 - R = RADIUS
 - ARC = ARC
 - CH = CHORD
 - CL = CHORD LENGTH
 - D.E. = DRAINAGE EASEMENT
 - U.E. = UTILITY EASEMENT
 - L.S.A.E. & U.E. = LIFT STATION ACCESS EASEMENT AND UTILITY EASEMENT
 - N = STATE PLANE COORDINATES
 - E = PALM BEACH COUNTY RECORDS
 - P.B.C.R. = OFFICIAL RECORD BOOK
 - O.R.B. = PAGE
 - PG. = PLAT BOOK
 - P.B. = TOWNSHIP
 - T 45 = RANGE
 - R 42 = OVERHANG EASEMENT
 - OHE = COMMISSION MINUTES BOOK
 - CMB = LIMITED ACCESS EASEMENT
 - L.A.E. = TEMPORARY CONSTRUCTION EASEMENT
 - T.C.E. = DEED BOOK
 - D.B. = LAKE MAINTENANCE ACCESS EASEMENT
 - L.M.A.E. = LAKE MAINTENANCE ACCESS EASEMENT

ACKNOWLEDGMENT (ACCEPTANCE OF DEDICATION—CITY OF BOYNTON BEACH)

STATE OF FLORIDA
COUNTY OF PALM BEACH
BEFORE ME PERSONALLY APPEARED JOHN GUIDRY WHO IS PERSONALLY KNOWN TO ME, OR HAS PRODUCED _____ AS IDENTIFICATION, AND WHO EXECUTED THE FOREGOING INSTRUMENT AS DIRECTOR OF UTILITIES FOR THE CITY OF BOYNTON BEACH, FLORIDA, A POLITICAL SUBDIVISION OF THE STATE OF FLORIDA AND SEVERALLY ACKNOWLEDGED TO AND BEFORE ME THAT HE EXECUTED SUCH INSTRUMENT AS SUCH DIRECTOR OF UTILITIES FOR SAID CITY OF BOYNTON BEACH, AND THAT SAID INSTRUMENT IS THE FREE ACT AND DEED OF SAID CITY OF BOYNTON BEACH, FLORIDA.

WITNESS MY HAND AND OFFICIAL SEAL THIS 15 DAY OF March, 2002.
MY COMMISSION EXPIRES: _____
Notary Public: Georganna Barden

ACKNOWLEDGEMENT (ACCEPTANCE OF DEDICATION—CITY OF BOYNTON BEACH) (NOTARY)
Georganna R. Barden
Notary Public
My Commission Expires: _____



SUBDIVISION JONATHAN'S CREEK
PAGE 42
FLOOD MAP # 190 B
ZONING RS/SE
QUAD # 35
SEC 00-705
T2G 928
PUD NAME

MATCHLINE SEE SHEET 3 OF 3

MATCHLINE SEE SHEET 3 OF 3

MATCHLINE SEE SHEET 3 OF 3

CYPRESS CREEK DEVELOPMENT (AM 80) NOT PLATTED

SOUTH LINE OF THE S1/2 OF THE NE1/4 OF THE NE1/4 SECTION 24, TOWNSHIP 45 SOUTH, RANGE 42 EAST